

Cartridge Kit for High Torque Vane Motor



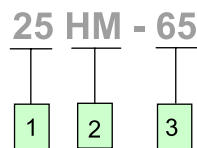
HM Series

Features

- The HM series cartridge kit is interchangeable with Vickers vane motor. It consists of a cam ring, rotor, 10 vanes, and 2 pressure plates. The cartridge is bolted together so parts can be serviced separately or as an assembly. A cartridge can be replaced without removing the unit from the machine, and usually without disconnecting the lines.
- To change rotation, reverse the motor ports. No need to do anything with the cartridge.



Ordering Code

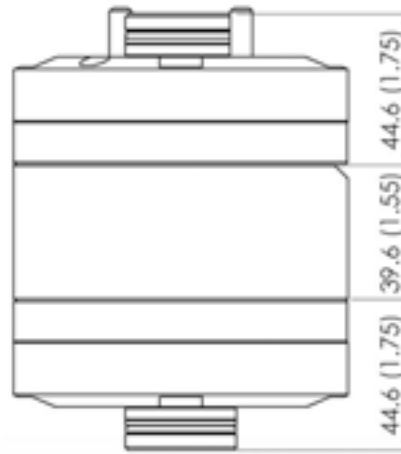


1 Model Series
25HM, 35HM, 45HM

2 Vane Type Motor
(Externally Drained)

3 Ring Size - Nominal torque Rating
(lb.in./100 psi)
25HM - 30, 42, 55, 65
35HM - 80, 95, 115
45HM - 132, 155, 185

Cartridge Kit 25HM Installation Dimensions mm(inch)

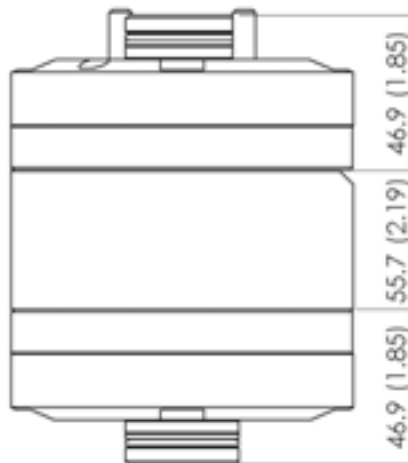


Model Series	Torque Nm/6, 9 bar (lb in / 100psi)	Displacement cm ³ /r (in ³ /r)	Flow input/ required @ 1200 r/min L/min (USgpm)	Maximam Speed & Pressure	Approx Weight kg (lb)
25HM	3.3 (30)	29.0 (1.77)	34.8 (9.19)	3600 r/min @ 34 bar (500 psi) ¹⁾ 4000 r/min @ 34 bar (500 psi) ²⁾	4.8 (10.5)
	4.7 (42)	43.9 (2.68)	52.6 (13.9)		4.8 (10.5)
	6.2 (55)	57.7 (3.52)	69.3 (18.3)		4.8 (10.5)
	7.3 (65)	68.7 (4.19)	82.5 (21.8)		4.8 (10.5)

1) Continuous Operation

2) Intermittent Operation

Cartridge Kit 35HM Installation Dimensions mm(inch)

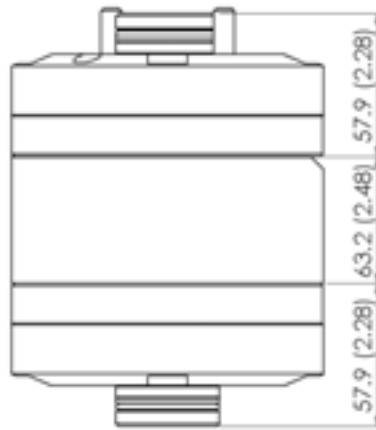


Model Series	Torque Nm/6, 9 bar (lb in / 100psi)	Displacement cm ³ /r (in ³ /r)	Flow input/ required @ 1200 r/min L/min (USgpm)	Maximam Speed & Pressure	Approx Weight kg (lb)
35HM	9.0 (80)	83.6 (5.10)	100.3 (26.5)	3600 r/min @ 34 bar (500 psi) ¹⁾ 4000 r/min @ 34 bar (500 psi) ²⁾	7.4 (16.3)
	10.7 (95)	100.3 (6.12)	120.4 (31.8)		7.4 (16.3)
	13.0 (115)	121.9 (7.44)	146.1 (38.6)		7.4 (16.3)

1) Continuous Operation

2) Intermittent Operation

Cartridge Kit 45HM Installation Dimensions mm (inch)



Model Series	Torque Nm/6, 9 bar (lb in / 100psi)	Displacement cm ³ /r (in ³ /r)	Flow input/ required @ 1200 r/min L/min (USgpm)	Maximam Speed & Pressure	Approx Weight kg (lb)
45HM	14.7 (130)	138.0 (8.42)	165.4 (43.7)	2400 r/min @ 155 bar (2250 psi) ¹⁾ 3000 r/min @ 172 bar (2500 psi) ²⁾	11.8 (26.0)
	17.5 (155)	163.2 (9.96)	195.7 (51.7)		11.8 (26.0)
	20.9 (185)	193.2 (11.79)	232.0 (61.3)		11.8 (26.0)

1) Continuous Operation

2) Intermittent Operation